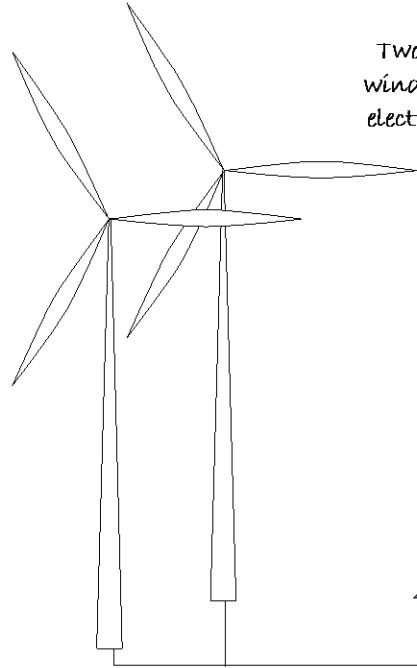
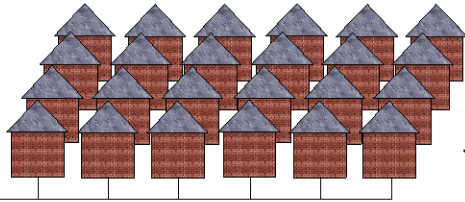


# Some turbine truths



Two super-efficient, extra-tall wind turbines generating clean electricity at wind speeds as low as 6.5mph ...

... feeding directly into the local grid to supply electricity to approximately 2400 homes in the Leighton Buzzard area, including Heath and Reach

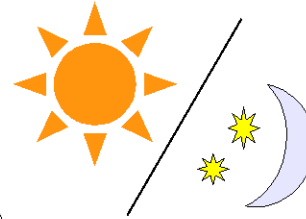


Only 2% of the energy is lost in distribution

Providing future security of supply for local energy needs



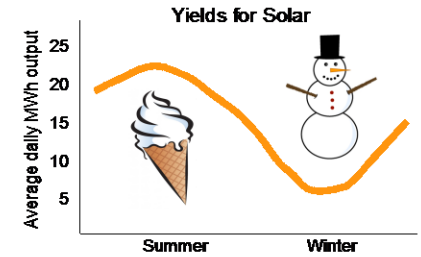
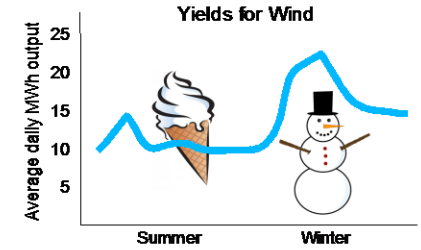
Wind turbines work can night and day ...



... all through the year ...

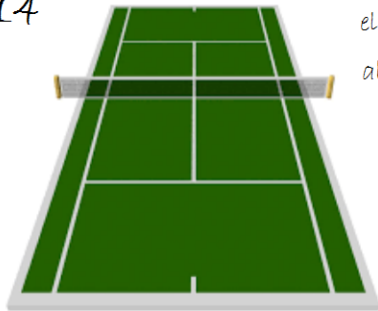


... unlike solar farms

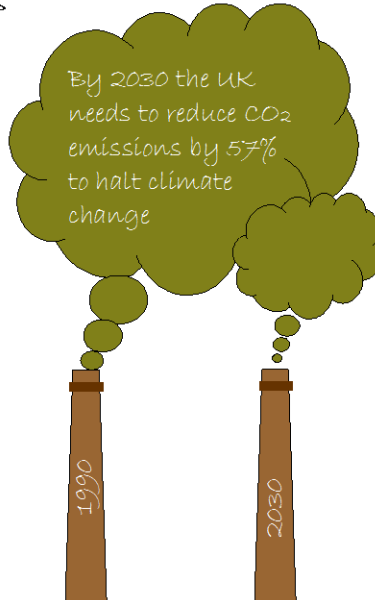


To reduce CO<sub>2</sub> we need to phase out fossil fuels and replace them with renewables

Each turbine takes up land the size of about 14 tennis courts

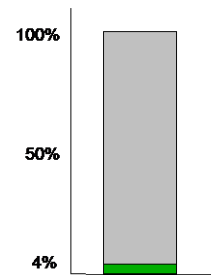
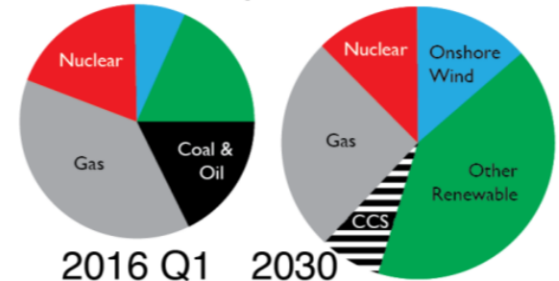


A solar farm producing the same amount of electricity needs about 1,120 tennis courts of land



By 2030 the UK needs to reduce CO<sub>2</sub> emissions by 57% to halt climate change

## Electricity Generation



The existing single turbine provides just 4% of our current local base-load electricity demand

We have not yet 'done our bit'